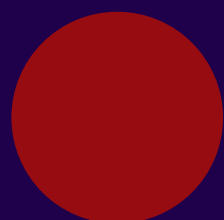


《全球保》  
个人与家庭  
医疗保险  
WorldCare  
Explained



*Individuals and families*



## 您绝对需要的国际医疗保险

### *Why you need international health insurance*

为了您的健康，您需要最佳医疗服务。

您不论置身国内或国外，都可随时随地获得顶尖的医疗保障。

▶ 国际医疗保险可让您联系到最权威的医生与专家、全球最高信誉的医院和诊所，且保证您的治疗费用纳入到医疗保障范围。

如果频繁出国旅行已成为您的一种生活方式，或是您想要保证在国内外都能获得最佳医疗服务，那么国际医疗保险是您的理想之选。

*You deserve the best for your health.*

*This means reliable access to first class medical treatment, when you need it, at home and abroad.*

▶ International health insurance gives you access to the most sought-after doctors and specialists and the most reputable hospitals and clinics worldwide, plus the confidence of knowing that your medical costs are covered.

If your lifestyle involves regular foreign travel, or you want guaranteed access to the best healthcare in China and abroad, you need international health insurance.

# 关于亚太财险与时康的合作

## About the Asia-Pacific P&C and Now Health partnership

亚太财险与时康国际携手合作，为全球客户提供最高端的医疗保险服务。

- ▶ 亚太财险资金雄厚、可靠、值得信赖，是中国知名的财产及意外险提供商之一。

其产品包括财产损失险、意外伤害保险和医疗保险，服务对象涵盖国内的个人、家庭与企业。

时康国际是一家备受赞誉的国际医疗保险服务商，办事处设立于上海、香港、雅加达、新加坡、迪拜、欧洲和英国。我们致力为全球客户提供顶尖医疗保险服务。

Asia-Pacific P&C has partnered with Now Health International to bring top-end medical insurance to customers around the world.

- ▶ Financially strong, reliable and well-respected, Asia-Pacific P&C is one of the leading property and casualty insurance providers in China.

Its products include property loss insurance, accident insurance and health insurance, which is available to individuals, families and businesses nationwide.

Now Health International is an award-winning international health insurance provider, with offices in Shanghai, Hong Kong, Jakarta, Singapore, Dubai, Europe and the UK. It offers premier international health insurance to customers worldwide.





## ▶ 亚太财险与时康是您的选择

### Why choose Asia-Pacific P&C and Now Health?

- ▶ 在中国20多个城市均可购买
- ▶ 屡获殊荣的国际医疗保险服务商 — 2019年荣膺Menair 保险奖 最具创新保险公司奖; 2018年亚洲保险新闻奖最佳电子商务保险公司奖; 以及2017年度中东保险业奖的年度创新奖
- ▶ 我们24/7, 全年365天为您提供服务的客户服务团队将提供有效专业的服务
- ▶ 遍布全球高质量的医疗网络为您提供世界各地的治疗
- ▶ 我们在上海拥有完全本地化的服务团队, 包括客户服务、保单管理、理赔和医疗服务, 以提供本地化的专家服务
- ▶ 时康国际是一家备受赞誉的国际医疗保险服务商, 分支机构设立于上海、香港、雅加达、新加坡、迪拜、欧洲、英国、百慕大和南美洲。我们致力为全球客户提供顶尖医疗保险服务
- ▶ 通过创新先进的网站可快速查看保单资料、管理报告和追踪理赔信息
- ▶ Available to buy in more than 20 cities in China
- ▶ An award winning provider – winner of the Most Innovative Insurer at the 2019 Menair Insurance Awards, Digital Insurer of the Year at the 2018 Insurance Asia News Awards and the Innovation of the Year at the 2017 Middle East Insurance Industry Awards
- ▶ 24-hours a day, 365-days a year in-house customer service team
- ▶ A worldwide network of high quality medical providers so your employees can access treatment anywhere in the world
- ▶ Full local administrative team in Shanghai including Customer Services, Policy Admin, Claims and Clinical services to provide local knowledge and expert service
- ▶ Now Health International is an award-winning international health insurance provider, with offices in Shanghai, Hong Kong, Jakarta, Singapore, Dubai, Europe, UK, Bermuda and Latin America. It offers premier international health insurance to customers worldwide
- ▶ An innovative, state-of-the-art website which provides instant access to policy documents, management information and claims tracking information

#### ▶ 我们的服务承诺

如果您提供我们需要的所有信息：

- ▶ 我们承诺在五个工作日内审核符合资格的理赔
- ▶ 我们将在两个工作日内作出承保审核决定
- ▶ 我们将在五个工作日内签发保险合同
- ▶ 我们将在五个工作日内给医疗机构签发预先付款担保函
- ▶ 我们将在一个工作日内回复所有问询

#### ▶ Our promise to you

Providing we have all the information we need:

- ▶ We assess eligible claims within five working days
- ▶ We make underwriting decisions within two working days
- ▶ We dispatch policy documents within five working days
- ▶ We place guarantees of payment with medical providers within five working days
- ▶ We respond to all enquiries within one working day

# 我们的增值服务 | Our added value services

时刻伴您左右, 在您需要时, 我们给您贴身支援

- ▶ 时康相信您的健康和福祉非常重要。我们的增值服务为您提供附加保障, 在您最需要的时候, 为您提供绝对的保护。



## 第二医疗意见

**理由:** 第二医疗意见可以帮助提供适当的诊断和治疗建议, 尤其是不确定诊断, 病情复杂或不确定选择何种治疗方案。

**内容:** 我们遍布全球的医疗专家网络, 为会员提供第二医疗意见服务, 确保会员获得正确的诊断和治疗。

会员可以在紧急和长期情况下使用此服务, 并且在大多数情况下, 第二医疗意见将在几天内提供。

**方法:** 只需联系您当地的客户服务团队即可使用此服务。

CustomerService@now-health.com

Support to stay well and support when you need it

- ▶ At Now Health we think it's important to support you with your overall health and wellbeing. That's why we offer a range of added value services in addition to your core plan protection, so you know we're there for you, every step of the way.

## Second Medical Opinion

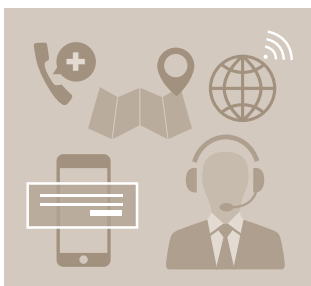
**Why:** A second medical opinion can help provide reassurance, particularly for those who are uncertain about their diagnosis, have a complex condition, or are unsure about what treatment plan to choose.

**What:** Leveraging our extensive network of medical experts worldwide, we provide our members with a second medical opinion service to help ensure you get the right diagnosis and the right treatment.

Members can access this service for both acute and long term conditions, and in most cases the second medical opinion will be delivered within a matter of days.

**How:** Simply contact your local Customer Service team to use this service.

CustomerService@now-health.com



## 全球礼宾服务

**理由:** 作为国际医疗保险提供者, 我们明白到许多会员可能会选择到海外寻求治疗, 远离他们的祖国。

**内容:** 为了帮助您更轻松地完成此过程, 我们提供礼宾服务以帮助您管理流程。这包括:

- ✔ 专家指导寻找相关的医疗
- ✔ 协助医疗预约
- ✔ 向医院提供付款保证, 包括在紧急情况下, 因此您无需预先付款

**方法:** 只需联系您当地的客户服务团队即可使用此服务。

CustomerService@now-health.com

## Global Concierge Service

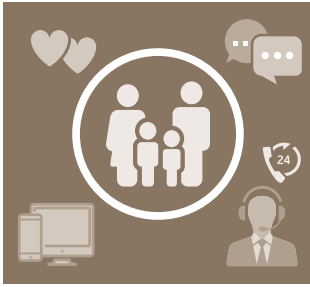
**Why:** As an international health insurance provider, we recognise that many of our members may choose to seek treatment overseas, away from their home country.

**What:** To help make this process easier for you, we provide concierge support to help you manage the process. This includes:

- ✔ Recommending where to get treatment
- ✔ Support to book medical appointments
- ✔ Placing guarantees of payment with the hospital, including in an emergency, so you don't need to pay up front

**How:** Simply contact your local Customer Service team to use this service.

CustomerService@now-health.com



## 会员援助计划(个人)

**理由:** 为了支持会员的整体健康状况和身体健康, 我们的国际保健计划将为会员提供广泛的保健服务。

**内容:** 会员援助计划由 LifeWorks (TELUS) 提供。服务包括:

- ✔ 提供24/7即时电话咨询服务, 多种语言咨询服务包括辅导、社会工作、心理学或人类服务
- ✔ 与专业人员的实时对话, 即时提供工作, 健康或生活问题帮助
- ✔ 与辅导员以会员的母语进行机密安全的电话或视频会议
- ✔ 每名会员在计划年度内可享有5次短期咨询服务

**方法:** 个人和家庭成员可以登录 [LifeWorks](#) 门户或下载 LifeWorks App。 [此处](#) 了解有关会员援助计划的更多信息。

## Member Assistance Programme (Individuals)

**Why:** To support our members with their overall wellbeing as well as their physical health, ensuring our international health plans continue to provide members with a broad health and wellness package.

**What:** The Member Assistance Programme is provided by LifeWorks (TELUS), it includes:

- ✔ Immediate support by phone from specialised professionals in counselling, social work, psychology or human services, available 24/7 in multiple languages
- ✔ Real-time online conversation with support professionals for immediate assistance with work, health or life issues
- ✔ Confidential and secure telephonic or video sessions with counsellors in members' native language
- ✔ Members are eligible for 5 sessions of short-term counselling per plan year

**How:** Individual and family members can log-in to the [LifeWorks Portal](#) or downloading the LifeWorks App. Learn more about the Member Assistance Programme [here](#).



## 时康慢病送药服务

时康现在提供慢病送药服务给特选客户。该服务提供给有慢性病福利的并且无自付额以及免赔额的客户。

该服务提供给需要长期服用药物控制的慢性疾病。温馨提示为了用药安全, 药物直送服务仅提供给病情稳定且服用现有药物3个月以上, 不需要调整药物的客户。

最高配送量: 最多90天的药量。

**内容:** 我们了解您的需要, 简单的流程来完成发出药品快递。

- ✔ 有配药需求的客户提早10个工作日给时康客服部发送电子邮件就配药需求
- ✔ 时康医疗部门将会审核医疗状况以及药品是否在客户承保范围。时康会通过邮件和您确认。该服务提供非处方药以及双轨制处方的口服药物
- ✔ 药房根据提供的客户地址, 安排送药
- ✔ 我们将支付相关费用, 客户无需支付费用

如您的药物在您的计划承保范围内, 您将会在提出慢病送药服务请求后的5个工作日内收到药品。

## Pharmacy Delivery Service for chronic illnesses

Fantastic news! You can now get any medicines you take to manage chronic illnesses delivered by our Pharmacy Delivery Service. This service is only offered to members with nil co-insurance and nil excess.

To be able to use this service, you must have already been taking medication for a chronic illness for more than three months.

You will be able to order up to 90 days' supply of your medicines at a time.

**What:** We understand you need to receive your medication in a timely manner and have designed a simple process to help achieve this.

- ✔ You email us your Pharmacy Delivery request at least 10 working days before you need the medicine
- ✔ If your condition and medication are covered under your plan, we will confirm by email. Please note we could offer over-the-counter non-prescription medicine and double tract system prescription oral medicines
- ✔ We will arrange with the pharmacy to dispense and deliver your medication
- ✔ We'll pay the relevant costs

Should your medicines be covered under your plan, you should receive them within 5 working days of making your Pharmacy Delivery request.

# 我们的数字工具 | Our digital tools

## 我们的网站 | Our Website

### 轻松在线管理您的保险计划

时康国际的在线平台使您的国际医疗保险计划方便使用, 让保单管理变得轻松简单, 比如查看并下载所有保单文件, 及追踪理赔变得快速、简单。

时康会将您的信息存放于您专属的网上安全组合区中(目前仅有英文版本), 方便您24小时全天候在世界任何地方查阅更多详细信息。

您可以查看并下载您的文件, 包括保险凭证、保险条款及任何表格, 帮助管理您的保险计划。

### 提交理赔和在线追踪您的理赔状态

当我们收到您的理赔申请, 如果您选择了以电子邮件或短信为通知方式, 我们会以此通知您。

### Manage your plan online

The Now Health International website is designed to make it simpler to manage your international health insurance from accessing your plan documents to tracking your claims.

Members can access their information at any time with Now Health, as all your details are stored in your secure online portfolio, which you can access 24-hours a day from anywhere in the world.

You can view and download all your plan documents including your certificate of insurance, members' handbook and any form you might need to manage your plan.

### Submit and track your claims online

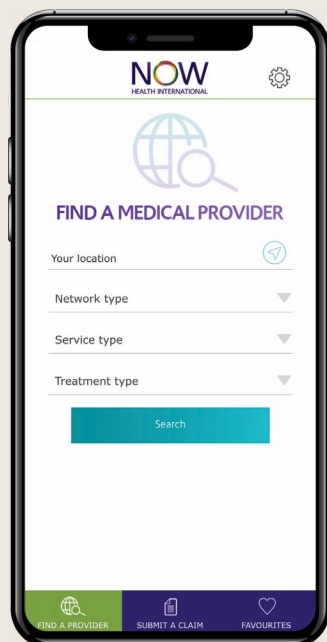
You can submit and track the status of all claims you make online. As soon as we receive your claim, we will notify you by email and SMS (if you have chosen this option).



## 我们的智能手机应用程序 Our Smartphone App

我们的智能手机应用程序能够让您以更加简单快捷的方式找到与您距离最近的医生和医疗机构。您可以访问数千的全球医疗人员, 轻松处理索赔。

Our smartphone App let's you claim and find doctors at the touch of a button. You can access thousands of medical professionals worldwide and enjoy quick and easy claims handling.



# 您的会员卡 Your Membership Card

我们的网上安全组合区旨在让您轻松访问您的计划。您可登录网上安全组合区下载会员卡并将其添加到智能手机钱包中。

我们与网络医疗提供商密切合作, 以便您到达医疗机构时他们可识别您的会员卡。

*Our secure online portfolio is designed to make it easy to access all your plan information in just a few clicks. You can use secure online portfolio to download membership card and add it to smartphone wallet.*

*We work closely with the medical providers in our network so they recognise your Now Health card. Any out-patient benefits you have selected will be clearly labelled on the card.*

## 会员卡正面 | On the Card front



SAMPLE

- Plan name and option
- Membership number
- In/Day-Patient Deductible
- Out-Patient Co-Insurance
- Direct Billing
- A barcode for medical providers
- 计划名称和选项
- 会员编号
- 住院/日间留院免赔额
- 门诊自付比例
- 直付服务
- 医疗服务提供者的条形码

## 会员卡背面 | On the Card back

### YOUR PLAN

#### VALIDATE MY PLAN

Name: Sara Mirae  
NHI Membership Number: BNFWCEX1234567  
Start Date: 07-AUG-23  
Expiry Date: 06-AUG-24  
In/Day-Patient Deductible: USD 0  
Out-Patient Excess: Nil per visit  
Out-Patient Co-Insurance: Nil  
Direct Billing:  
(Excluding American Hospital & Clinics Dubai)  
– Out-Patient & In/Day-Patient  
– Maternity Nil Co-Insurance  
Area of Cover: Worldwide Excluding USA  
Network:  
Group Name: N/A

View your full plan benefits. Tap here to log into your portfolio and select 'My Plan'.

#### SUBMIT CLAIM

Use the app button at the top of the pass to use the mobile app.  
Tap here to log in to your portfolio.

#### TRACK YOUR CLAIMS

Tap here to log into your portfolio and select 'My Claims'.

#### HOW TO REACH US

Tap here to chat online

#### CUSTOMER SERVICE:

Asia Pacific: +85222797310  
Indonesia Toll-free: 08001889900

Indonesia Toll: +622127836910

Singapore: +6568802300

China: +862161560910

UK: +441276602110

Malta: +35622605110

Spain: +34911841690

UAE: +97144501410

Rest of the World: +97144501510

#### 24-HOUR EMERGENCY ASSISTANCE:

Asia Pacific: +85222797340

Indonesia: +622127836940

Singapore: +6568802304

China: +862161560914

UK: +441276602110

Malta: +35622605240

Spain: +34911841691

UAE: +97144501440

Rest of the World: +97144501540

#### MAILING ADDRESS:

Asia-Pacific Property & Casualty Insurance Co., Ltd  
c/o Now Health International (Shanghai) Limited  
Room 1103B-1105, 11/F, BM Tower,  
No. 218 Wusong Road, Hongkou District,  
Shanghai 200080, China

#### INSURANCE DETAILS

This plan is issued by Asia-Pacific Property & Casualty Insurance Co., Ltd. Policies are administered by Now Health International (Shanghai) Limited.

#### LATEST NEWS

Tap here to find out the latest news from us.

Tap here to read our blog.

Tap here to watch our explainer videos.

- Member name
- Membership number
- Start Date
- Expiry Date
- Plan information
- Submit claim
- Track your claims
- Customer Service
- 24-HOUR Emergency Assistance
- Mailing address
- Insurance details
- Latest news
- 会员姓名
- 会员编号
- 生效日期
- 有效期
- 计划详情
- 提交索赔
- 跟踪您的索赔
- 客户服务
- 24小时紧急援助
- 邮寄地址
- 保险详情
- 最新消息

SAMPLE



# 《全球保》简介

## Introducing WorldCare

《全球保》是顶尖的国际医疗保险计划, 由亚太财产保险有限公司承保, 并委托时康管理顾问(上海)有限公司进行保单管理。

《全球保》为客户提供高医疗保障方案, 包括为多种病症提供全额赔偿和全球医疗服务(不含美国)。

《全球保》保障全面, 产品灵活, 更设有附加保障, 可以适应不同情况的需求。

*WorldCare is a premier international health insurance plan insured by Asia-Pacific P&C and administered by Now Health International. WorldCare benefit levels are extremely high, including full refund for many conditions, and you are covered for treatment worldwide excluding the USA.*

*Each WorldCare option is designed to give comprehensive care to suit different circumstances and the additional options offer ultimate flexibility.*

### 《全球保》简介 | Introducing WorldCare

- |   |   |
|---|---|
| <p> <b>01</b> 每个保险期间最高金额达 2,800 万元人民币的全面保障<br/>Comprehensive overall maximum benefit limit up to RMB 28m per period of cover</p> <p> <b>02</b> 免赔额将适用于每个保险期间发生的住院或日间留院的医疗费用。您可决定哪个保单免赔额选项更适合您的情况, 因为这将增加或降低需支付的保险费<br/>We also have a range of annual In and Day-Patient Deductibles to suit your lifestyle. Deductibles give you greater flexibility to tailor your plan to your needs – from a high deductible to reduce your premium, to a low or nil deductible if you expect to use your plan frequently</p> <p> <b>03</b> 全球保有多种附加门诊治疗选项以适应不同情况的需求。若投保人选择了其中一项免赔额选项, 投保人需要就门诊费用的自付比例或门诊每次就诊免赔额的其中一项作出选择<br/>Co-insurance Out-Patient Treatment or Out-Patient Per Visit Excess options are available for added flexibility. If you choose an optional deductible, you must select a Co-insurance Out-patient Treatment Option or an Out-Patient Per Visit Excess Option</p> <p> <b>04</b> 全额赔偿器官移植, 癌症治疗, 转运和送返的费用<br/>Full refund for organ transplants, cancer, evacuation and repatriation</p> | <p> <b>05</b> 全面的生育保障和牙科治疗可供选择<br/>Comprehensive maternity and dental care options</p> <p> <b>06</b> 先天性疾病保障, 最高保额为每个保险期间 945,000 元人民币<br/>Cover for congenital disorders up to RMB 945,000 per period of cover</p> <p> <b>07</b> 肾衰竭和肾透析保障, 最高保额为每个保险期间 630,000 元人民币<br/>Cover for renal failure and dialysis up to RMB 630,000 per period of cover</p> <p> <b>08</b> 器官移植捐献者医疗费用保障, 最高保额为每个保险期间 310,000 元人民币<br/>Cover for donor medical costs for organ transplants up to RMB 310,000 per period of cover</p> <p> <b>09</b> 新会员最高参保年龄可至 79 岁<br/>续保无年龄限制<br/>New members accepted up to age 79<br/>No age limit for renewals</p> <p> <b>10</b> 高度灵活及中国特有的可选保障, 可满足不同的个人需求<br/>Flexible China-specific optional benefits to meet your needs</p> |
|---|---|

# 《全球保》概览 | WorldCare at a glance

各项保险计划的保障一览表。每保单可选择最高为8项的附加选项。

A summary of each plan is shown below. Maximum eight additional options can be selected per policy.

《全球保》 尊安保险计划 WorldCare Essential	《全球保》 尊乐保险计划 WorldCare Advance	《全球保》 尊爱保险计划 WorldCare Excel	《全球保》 尊享保险计划 WorldCare Apex
<ul style="list-style-type: none"> <li>✓ 住院及日间留院护理 In-patient and day-patient care</li> <li>✗ 生育保障 Maternity</li> <li>○ 例行及复杂牙科治疗 Routine &amp; complex dental treatment</li> <li>○ 门诊医生费用保障 – 选项1 Out-patient charges – Option 1</li> <li>○ 门诊医生费用保障 – 选项2 Out-patient charges – Option 2</li> <li>○ 门诊医生费用保障 – 选项3 Out-patient charges – Option 3</li> <li>○ 尊安计划下的门诊医生费用保障 – 选项2之直付网络 Direct billing network for optional out-patient charges – option 2</li> <li>○ 更年期激素替代治疗 Menopause Hormone Replacement Therapy</li> <li>○ 免赔额 Annual deductible</li> <li>○ 美国境内的选择性治疗 USA elective treatment</li> <li>○ 转运和送返的增强保障 Extended evacuation and repatriation</li> <li>○ 体检、眼科、疫苗(1或2) Wellness, optical and vaccinations (1 or 2)</li> <li>○ 体检、疫苗(3) Wellness and vaccinations (3)</li> <li>○ 大中华区选择 Greater China option</li> <li>○ 病房限制(仅适用于中国大陆居民) Hospital room restriction – PRC residents only</li> <li>○ 体检、疫苗(3) Wellness and vaccinations (3)</li> <li>○ 大中华区选择 Greater China option</li> <li>○ 病房限制(仅适用于中国大陆居民) Hospital room restriction – PRC residents only</li> <li>○ 体检、疫苗(3) Wellness and vaccinations (3)</li> <li>○ 大中华区选择 Greater China option</li> <li>○ 病房限制(仅适用于中国大陆居民) Hospital room restriction – PRC residents only</li> <li>○ 昂贵医院限制 High cost provider restriction</li> <li>○ 门诊限制 Out-patient restriction</li> <li>○ 住院及门诊自付比例 In-patient and out-patient co-insurance</li> <li>○ 医院病房住宿费限制选项 Hospital Room Rate Restriction Option</li> <li>○ 大中华区公立医院选项 Greater China Public Hospital Option</li> </ul>	<ul style="list-style-type: none"> <li>✓ 住院及日间留院护理 In-patient and day-patient care</li> <li>✓ 门诊护理 Out-patient care</li> <li>✓ 更年期激素替代治疗 Menopause Hormone Replacement Therapy</li> <li>✗ 生育保障 Maternity</li> <li>○ 例行及复杂牙科治疗 Routine &amp; complex dental treatment</li> <li>○ 免赔额 Annual deductible</li> <li>○ 门诊每次就诊免赔额(150或90人民币) Out-patient per visit excess (RMB 150/RMB 90)</li> <li>○ 门诊费用的自付比例(10%/20%) Co-insurance out-patient treatment (10%/20%)</li> <li>○ 美国境内的选择性治疗 USA elective treatment</li> <li>○ 转运和送返的增强保障 Extended evacuation and repatriation</li> <li>○ 体检、眼科、疫苗(1或2) Wellness, optical and vaccinations (1 or 2)</li> <li>○ 体检、疫苗(3) Wellness and vaccinations (3)</li> <li>○ 大中华区选择 Greater China option</li> <li>○ 病房限制(仅适用于中国大陆居民) Hospital room restriction – PRC residents only</li> <li>○ 昂贵医院自付比例 High cost provider co-insurance</li> <li>○ 昂贵医院限制 High cost provider restriction</li> <li>○ 门诊限制 Out-patient restriction</li> <li>○ 住院及门诊自付比例 In-patient and out-patient co-insurance</li> <li>○ 医院病房住宿费限制选项 Hospital Room Rate Restriction Option</li> <li>○ 大中华区公立医院选项 Greater China Public Hospital Option</li> </ul>	<ul style="list-style-type: none"> <li>✓ 住院及日间留院护理 In-patient and day-patient care</li> <li>✓ 门诊护理 Out-patient care</li> <li>✓ 更年期激素替代治疗 Menopause Hormone Replacement Therapy</li> <li>✓ 例行及复杂牙科治疗 Routine &amp; complex dental treatment</li> <li>✗ 生育保障 Maternity</li> <li>○ 免赔额 Annual deductible</li> <li>○ 门诊每次就诊免赔额(150或90人民币) Out-patient per visit excess (RMB 150/RMB 90)</li> <li>○ 门诊费用的自付比例(10%/20%) Co-insurance out-patient treatment (10%/20%)</li> <li>○ 美国境内的选择性治疗 USA elective treatment</li> <li>○ 转运和送返的增强保障 Extended evacuation and repatriation</li> <li>○ 体检、眼科、疫苗(1或2) Wellness, optical and vaccinations (1 or 2)</li> <li>○ 体检、疫苗(3) Wellness and vaccinations (3)</li> <li>○ 大中华区选择 Greater China option</li> <li>○ 病房限制(仅适用于中国大陆居民) Hospital room restriction – PRC residents only</li> <li>○ 昂贵医院自付比例 High cost provider co-insurance</li> <li>○ 昂贵医院限制 High cost provider restriction</li> <li>○ 住院及门诊自付比例 In-patient and out-patient co-insurance</li> <li>○ 医院病房住宿费限制选项 Hospital Room Rate Restriction Option</li> <li>○ 大中华区公立医院选项 Greater China Public Hospital Option</li> </ul>	<ul style="list-style-type: none"> <li>✓ 住院及日间留院护理 In-patient and day-patient care</li> <li>✓ 门诊护理 Out-patient care</li> <li>✓ 更年期激素替代治疗 Menopause Hormone Replacement Therapy</li> <li>✓ 例行及复杂牙科治疗 Routine &amp; complex dental treatment</li> <li>✓ 生育保障 Maternity</li> <li>○ 免赔额 Annual deductible</li> <li>○ 门诊每次就诊免赔额(150或90人民币) Out-patient per visit excess (RMB 150/RMB 90)</li> <li>○ 门诊费用的自付比例(10%/20%) Co-insurance out-patient treatment (10%/20%)</li> <li>○ 美国境内的选择性治疗 USA elective treatment</li> <li>○ 转运和送返的增强保障 Extended evacuation and repatriation</li> <li>○ 体检、眼科、疫苗(1或2) Wellness, optical and vaccinations (1 or 2)</li> <li>○ 体检、疫苗(3) Wellness and vaccinations (3)</li> <li>○ 大中华区选择 Greater China option</li> <li>○ 病房限制(仅适用于中国大陆居民) Hospital room restriction – PRC residents only</li> <li>○ 昂贵医院自付比例 High cost provider co-insurance</li> <li>○ 昂贵医院限制 High cost provider restriction</li> <li>○ 住院及门诊自付比例 In-patient and out-patient co-insurance</li> <li>○ 医院病房住宿费限制选项 Hospital Room Rate Restriction Option</li> </ul>

# 《全球保》保障一览表 | WorldCare benefit schedule

保障 Benefit	尊安 Essential	尊乐 Advance	尊爱 Excel	尊享 Apex	
<b>年度最高计划限额</b> Annual Maximum Policy Limit	RMB 18,500,000	RMB 22,000,000	RMB 25,000,000	RMB 28,000,000	
<b>1. 医院收费、医生和专科医生费用</b> Hospital Charges, Medical Practitioner and Specialist Fees	<ul style="list-style-type: none"> <li>a) 全额赔偿 Full refund</li> <li>b) 每个医疗状况最高限额 12,600 人民币 Up to RMB 12,700 per medical condition</li> </ul>	<ul style="list-style-type: none"> <li>a) 全额赔偿 Full refund</li> <li>b) 每个医疗状况最高限额 12,600 人民币 Up to RMB 12,700 per medical condition</li> </ul>	<ul style="list-style-type: none"> <li>a) 全额赔偿 Full refund</li> <li>b) 每个医疗状况最高限额 18,900 人民币 Up to RMB 18,900 per medical condition</li> </ul>	<ul style="list-style-type: none"> <li>a) 全额赔偿 Full refund</li> <li>b) 每个医疗状况最高限额 25,200 人民币 Up to RMB 25,200 per medical condition</li> </ul>	
<ul style="list-style-type: none"> <li>a) 住院或日间留院治疗费用 Charges for in-patient or day-patient treatment</li> <li>b) 因符合保障范围的疾病接受住院或日间留院治疗，且医疗所需之耐用医疗设备、假肢和矫形用品由您的主治医生开具处方，并在接受住院或日间留院治疗 6 个月内需用，我们将赔付以下符合保障范围的费用：- Durable Medical Equipment, Prosthetic and Orthotic Supplies (DMEPOS) when supplied within 6 months of In Patient or Day Patient Hospital treatment for an eligible medical condition, which is prescribed by your treating medical practitioner. We will pay for the following items: -                             <ul style="list-style-type: none"> <li>i. 购买或租借拐杖、气垫靴、首次购买或租借轮椅（自推进式） Purchase or rental of crutches, air boots and initial purchase or rental of a wheelchair (self-propelled)</li> <li>ii. 处方药物和敷料的输送系统 Delivery systems for prescribed drugs and dressings</li> <li>iii. 矫形用品，例如鞋垫和矫形支架 Orthotic supplies such as insoles and orthotic supports</li> <li>iv. 术后所需的外用假体，包括支架和矫形器，以及首次购买和安装人造肢体和人造眼睛。不包括助听器。 External prosthetics required after surgery. These include braces and calipers, initial purchase and fitting of an artificial limb and artificial eyes. Excludes hearing aids.</li> </ul> </li> </ul>					
<b>2. 诊断程序</b> Diagnostic Procedures	住院、日间留院或门诊全额赔偿 Full refund	住院、日间留院或门诊全额赔偿 Full refund	住院、日间留院或门诊全额赔偿 Full refund	住院、日间留院或门诊全额赔偿 Full refund	
<b>3. 紧急救护运送费用</b> Emergency Ambulance Transportation	全额赔偿 Full refund	全额赔偿 Full refund	全额赔偿 Full refund	全额赔偿 Full refund	
<b>4. 家长住宿费用</b> Parent Accommodation	全额赔偿 Full refund	全额赔偿 Full refund	全额赔偿 Full refund	全额赔偿 Full refund	
<b>5. 新生儿保障</b> New Born Baby Cover	每个保险期内最高限额 630,000 人民币 Up to RMB 630,000 per period of cover	每个保险期内最高限额 630,000 人民币 Up to RMB 630,000 per period of cover	每个保险期内最高限额 780,000 人民币 Up to RMB 780,000 per period of cover	每个保险期内最高限额 940,000 人民币 Up to RMB 940,000 per period of cover	
<b>6. 新生儿陪伴母亲的医院住宿费用</b> Hospital Accommodation for New Born Accompanying their Mother	全额赔偿 Full refund	全额赔偿 Full refund	全额赔偿 Full refund	全额赔偿 Full refund	
<b>7. 整形外科手术</b> Reconstructive Surgery	全额赔偿 Full refund	全额赔偿 Full refund	全额赔偿 Full refund	全额赔偿 Full refund	
<b>8. 紧急住院牙科治疗</b> In-Patient Emergency Dental Treatment	全额赔偿 Full refund	全额赔偿 Full refund	全额赔偿 Full refund	全额赔偿 Full refund	
<b>9. 住院精神疾病治疗</b> In-Patient Psychiatric Treatment	每个保险期内全额赔偿，最长期限为 30 日 Full refund limited to 30 days per period of cover	每个保险期内全额赔偿，最长期限为 30 日 Full refund limited to 30 days per period of cover	每个保险期内全额赔偿，最长期限为 30 日 Full refund limited to 30 days per period of cover	每个保险期内全额赔偿，最长期限为 30 日 Full refund limited to 30 days per period of cover	
<b>10. 终末期疾病 - 姑息治疗和临终关怀</b> Terminal Illness - Palliative and hospice care	住院和日间留院治疗终生最高限额为 310,000 人民币 Eligible in-patient and day-patient treatment only up to RMB 310,000 lifetime limit	终生最高限额为 310,000 人民币 Up to RMB 310,000 lifetime limit	终生最高限额为 470,000 人民币 Up to RMB 470,000 lifetime limit	终生最高限额为 630,000 人民币 Up to RMB 630,000 lifetime limit	
<b>11. 美国境内的紧急非选择性治疗 - 在不超过 30 日(含 30 日)的计划行程</b> Emergency Non-Elective Treatment USA Cover For planned trips up to 30 days of duration	<ul style="list-style-type: none"> <li>意外：意外后的住院和日间留院治疗全额赔偿 Accident: Full refund for in-patient and day-patient treatment following accident</li> <li>疾病：住院和日间留院护理 每个保险期内最高限额 150,000 人民币 Illness: In-patient and day-patient care up to RMB 150,000 per period of cover</li> <li>医院急诊部之门诊治疗： 每个保险期内最高限额 3,150 人民币 Out-Patient Treatment in an Accident and Emergency Department in a hospital up to RMB 3,150</li> </ul>	<ul style="list-style-type: none"> <li>意外：意外后的住院和日间留院治疗全额赔偿 Accident: Full refund for in-patient and day-patient treatment following accident</li> <li>疾病：住院和日间留院护理 每个保险期内最高限额 150,000 人民币 Illness: In-patient and day-patient care up to RMB 150,000 per period of cover</li> <li>医院急诊部之门诊治疗： 每个保险期内最高限额 3,150 人民币 Out-Patient Treatment in an Accident and Emergency Department in a hospital up to RMB 3,150</li> </ul>	<ul style="list-style-type: none"> <li>意外：意外后的住院和日间留院治疗全额赔偿 Accident: Full refund for in-patient and day-patient treatment following accident</li> <li>疾病：住院和日间留院护理 每个保险期内最高限额 220,000 人民币 Illness: In-patient and day-patient care up to RMB 220,000 per period of cover</li> <li>医院急诊部之门诊治疗： 每个保险期内最高限额 3,150 人民币 Out-Patient Treatment in an Accident and Emergency Department in a hospital up to RMB 3,150</li> </ul>	<ul style="list-style-type: none"> <li>意外：意外后的住院和日间留院治疗全额赔偿 Accident: Full refund for in-patient and day-patient treatment following accident</li> <li>疾病：住院和日间留院护理 每个保险期内最高限额 310,000 人民币 Illness: In-patient and day-patient care up to RMB 310,000 per period of cover</li> <li>医院急诊部之门诊治疗： 每个保险期内最高限额 3,150 人民币 Out-Patient Treatment in an Accident and Emergency Department in a hospital up to RMB 3,150</li> </ul>	
<b>12. 住院现金津贴</b> Hospital Cash Benefit	<ul style="list-style-type: none"> <li>(i) 住院治疗 In-Patient Treatment</li> <li>(ii) 重大择期手术 Major Elective Surgeries</li> </ul> 9 个月等待期适用于项目(ii) A 9 month wait period applies to (ii) 如果您选择了大中华区公立医院选项，此项保障不予赔偿。 This benefit is not payable if you have selected the Greater China Public Hospital Option.	<ul style="list-style-type: none"> <li>(i) 最高限额 1,260 人民币 Up to RMB 1,260</li> <li>(ii) 最高限额 6,300 人民币 Up to RMB 6,300</li> </ul>	<ul style="list-style-type: none"> <li>(i) 最高限额 1,260 人民币 Up to RMB 1,260</li> <li>(ii) 最高限额 6,300 人民币 Up to RMB 6,300</li> </ul>	<ul style="list-style-type: none"> <li>(i) 最高限额 1,260 人民币 Up to RMB 1,260</li> <li>(ii) 最高限额 6,300 人民币 Up to RMB 6,300</li> </ul>	
<b>13. 艾滋病</b> AIDS	因有证明的工作意外事故或输血而感染。保障提供仅限于被保险人已连续投保三年以上 As a result of proven occupational accident or blood transfusion. Cover only available after three years of continuous membership	住院及日间留院治疗最高限额 150,000 人民币 In-patient and day-patient treatment only up to RMB 150,000	每个保险期内最高限额 150,000 人民币 Up to RMB 150,000 per period of cover	每个保险期内最高限额 250,000 人民币 Up to RMB 250,000 per period of cover	每个保险期内最高限额 310,000 人民币 Up to RMB 310,000 per period of cover
<b>14. 器官移植</b> Organ Transplant	<ul style="list-style-type: none"> <li>a) 治疗 Treatment</li> <li>b) 捐献者医疗费用 Donor medical costs</li> </ul>	<ul style="list-style-type: none"> <li>a) 全额赔偿 Full refund</li> <li>b) 每个保险期内最高限额 310,000 人民币 Up to RMB 310,000 per period of cover</li> </ul>	<ul style="list-style-type: none"> <li>a) 全额赔偿 Full refund</li> <li>b) 每个保险期内最高限额 310,000 人民币 Up to RMB 310,000 per period of cover</li> </ul>	<ul style="list-style-type: none"> <li>a) 全额赔偿 Full refund</li> <li>b) 每个保险期内最高限额 310,000 人民币 Up to RMB 310,000 per period of cover</li> </ul>	<ul style="list-style-type: none"> <li>a) 全额赔偿 Full refund</li> <li>b) 每个保险期内最高限额 310,000 人民币 Up to RMB 310,000 per period of cover</li> </ul>
<b>15. 癌症治疗</b> Cancer Treatment	全额赔偿 Full refund	全额赔偿 Full refund	全额赔偿 Full refund	全额赔偿 Full refund	

▶ 全额赔偿 Full refund    
 ▶ 不予承保 Not covered    
 ▶ 有限承保 Subject to limits    
 ▶ 可供选项 Optional

保障 Benefit	尊安 Essential	尊乐 Advance	尊爱 Excel	尊享 Apex
<b>16. 怀孕期间医疗状况</b> <b>Pregnancy Medical Conditions</b> 保险人应赔付产前期间因保障范围内的医疗状况所产生的实际住院治疗费用;或分娩期间因保障范围内的医疗状况所产生的实际住院治疗费用。 <i>In-patient treatment of an eligible medical condition which arises during the antenatal stages of pregnancy, or an eligible medical condition which arises during childbirth.</i> (医疗上必需的和/或紧急剖腹产除外) (Excluding costs for medically necessary and/or emergency caesarean section)	▶ 全额赔偿 Full refund	▶ 全额赔偿 Full refund	▶ 全额赔偿 Full refund	▶ 全额赔偿 Full refund
<b>17. 转运和送返 Evacuation and Repatriation</b> <b>a) 转运 Evacuation</b> i) 交通费用 Transportation costs ii) 接受日间留院治疗期间,往返医院赴诊时的当地合理交通费用 Reasonable local travel costs to and from medical appointments iii) 随行照料人员在往返医院时产生的合理交通费用 Reasonable travel costs for a locally-accompanying person iv) 非医院住宿费用 Non-hospital accommodation cost <b>b) 送返 Repatriation</b> 完成治疗后安排返回治疗地或国籍所居国或其经常居住地 Repatriation to country of residence following treatment	▶ i) 全额赔偿 Full refund ▶ ii) 全额赔偿 Full refund ▶ iii) 全额赔偿 Full refund ▶ iv) 每日最高限额1,200人民币 每人每次转运最高限额 47,000人民币 Up to RMB 1,200 per day Up to RMB 47,000 per person, per evacuation	▶ i) 全额赔偿 Full refund ▶ ii) 全额赔偿 Full refund ▶ iii) 全额赔偿 Full refund ▶ iv) 每日最高限额1,200人民币 每人每次转运最高限额 47,000人民币 Up to RMB 1,200 per day Up to RMB 47,000 per person, per evacuation	▶ i) 全额赔偿 Full refund ▶ ii) 全额赔偿 Full refund ▶ iii) 全额赔偿 Full refund ▶ iv) 每日最高限额1,200人民币 每人每次转运最高限额 47,000人民币 Up to RMB 1,200 per day Up to RMB 47,000 per person, per evacuation	▶ i) 全额赔偿 Full refund ▶ ii) 全额赔偿 Full refund ▶ iii) 全额赔偿 Full refund ▶ iv) 每日最高限额1,800人民币 每人每次转运最高限额 63,000人民币 Up to RMB 1,800 per day Up to RMB 63,000 per person, per evacuation
<b>18. 遗体运送 Mortal Remains</b> a) 运送被保险人体体或骨灰的费用;或, Transportation of body or ashes of an insured person, or b) 死亡所在地的土葬或火葬时产生的费用 Burial or cremation costs at the place of death	▶ a) 全额赔偿 Full refund ▶ b) 最高限额63,000人民币 Up to RMB 63,000	▶ a) 全额赔偿 Full refund ▶ b) 最高限额63,000人民币 Up to RMB 63,000	▶ a) 全额赔偿 Full refund ▶ b) 最高限额94,000人民币 Up to RMB 94,000	▶ a) 全额赔偿 Full refund ▶ b) 最高限额126,000人民币 Up to RMB 126,000
<b>19. 日间留院和门诊手术 Day-Patient and Out-Patient Surgery</b>	▶ 全额赔偿 Full refund	▶ 全额赔偿 Full refund	▶ 全额赔偿 Full refund	▶ 全额赔偿 Full refund
<b>20. 门诊医生费用 Out-Patient Charges</b> a) 含咨询费在内的医生收费;专科医生费用;诊断检查费用;处方药和敷料的费用。 Medical practitioner fees including consultations; specialist fees; diagnostic tests; prescribed drugs and dressings. b) 远程医疗咨询(医生以电子方式进行远程医疗咨询) Teleconsultation (Virtual Doctor appointments via electronic means) c) 维生素和矿物质 Vitamins and Minerals	▶ a) 和 b) 每个保险期内的每个医疗状况的门诊医生费用,包括手术前的咨询及诊断程序的费用,从入院前的15日至出院后的门诊费用,最长30日,综合最高总限额12,600人民币 ▶ c) 不予承保 Not covered	▶ a) 和 b) 全额赔偿 a) and b) Full refund ▶ c) 每个保险期内最高限额940元人民币 Up to RMB 940 per period of cover	▶ a) 和 b) 全额赔偿 a) and b) Full refund ▶ c) 每个保险期内最高限额940元人民币 Up to RMB 940 per period of cover	▶ a) 和 b) 全额赔偿 a) and b) Full refund ▶ c) 每个保险期内最高限额940元人民币 Up to RMB 940 per period of cover
<b>21. 更年期激素替代治疗 Menopause Hormone Replacement Therapy</b>	▶ 不予承保 Not covered	▶ 每个保险期内最高限额3,150人民币 Up to RMB 3,150 per period of cover	▶ 每个保险期内最高限额3,750人民币 Up to RMB 3,750 per period of cover	▶ 每个保险期内最高限额4,700人民币 Up to RMB 4,700 per period of cover
<b>22. 门诊精神疾病治疗 Out-Patient Psychiatric Illness</b>	▶ 不予承保 Not covered	▶ 每个保险期内最高10次,综合最高总限额15,000人民币 Up to RMB 15,000 and subject to a maximum of 10 sessions per period of cover	▶ 每个保险期内最高15次,综合最高总限额31,000人民币 Up to RMB 31,000 and subject to a maximum of 15 sessions per period of cover	▶ 每个保险期内最高20次,综合最高总限额47,000人民币 Up to RMB 47,000 and subject to a maximum of 20 sessions per period of cover
<b>23. 门诊物理治疗和替代疗法</b> <b>Out-Patient Physiotherapy and Alternative Therapies</b> 保险人应赔付以下项目实际产生的医疗费用: The insurer will cover the actual incurred medical cost of: a) 由获得执业许可的物理治疗师提供的物理治疗费用。 Physiotherapy by a Registered Physiotherapist. b) 被保险人接受物理治疗师的辅助药物和治疗,此类赔偿可包括整骨疗法、手足病治疗和足病治疗、整脊疗法、顺势疗法、饮食疗法和针灸疗法的费用。物理治疗的医疗费用第五条款下23款a)将不包含于此保障。 Complementary medicine and treatment by a therapist. This benefit extends to chiropractors, chiropodists and podiatrists, osteopaths, homeopaths, dietician and acupuncture treatment but excludes Physiotherapist covered in a). 保险期内您可选择此保障a.或b.,合计首5次治疗不需转介(饮食疗法除外),其他后续治疗需医生或专科医生转介。 You may choose 5 sessions for any combination of benefits in aggregate in a given period of cover for benefits a) and b) excluding dietician without the need of referral; any subsequent sessions need to be referred by a Medical Practitioner or Specialist. 门诊每次就诊免赔额并不适用于此保障。 For this benefit, the out-patient per visit excess does not apply	▶ a) 住院后30天内最多5次就诊。 Up to 5 sessions within 30 days after hospitalisation ▶ b) 不予承保 Not covered	▶ a) 每个保险期内最高20次 全额赔偿 Full refund up to a maximum 20 sessions per period of cover ▶ b) 每个保险期内最高达15次,每次最高限额315人民币 Up to RMB 315 per visit up to a maximum of 15 visits per period of cover	▶ a) 每个保险期内最高25次 全额赔偿 Full refund up to a maximum 25 sessions per period of cover ▶ b) 每个保险期内最高达15次,每次最高限额630人民币 Up to RMB 630 per visit up to a maximum of 15 visits per period of cover	▶ a) 每个保险期内最高30次 全额赔偿 Full refund up to a maximum 30 sessions per period of cover ▶ b) 每个保险期内最高达15次,每次最高限额945人民币 Up to RMB 945 per visit up to a maximum of 15 visits per period of cover
<b>24. 中医治疗和阿育吠陀治疗</b> <b>Traditional Chinese Medicine and Ayurvedic Treatment</b>	▶ 不予承保 Not covered	▶ 每个保险期内最高限额6,500人民币 Up to RMB 6,500 per period of cover	▶ 每个保险期内最高限额10,000人民币 Up to RMB 10,000 per period of cover	▶ 每个保险期内最高限额15,000人民币 Up to RMB 15,000 per period of cover
<b>25. 家居护理 Nursing Care at Home</b> a) 合格护士在被保险人家中提供护理的费用 Care given by qualified nurse b) 紧急出诊要求的情况下,全科医生在正常门诊时间之外出诊的费用 Emergency medical practitioner (GP) home visits	▶ a) 每日最高限额为630人民币 每个保险期内最高达30日 RMB 630 per day Up to 30 days per period of cover ▶ b) 不予承保 Not covered	▶ a) 全额赔偿最高达45日 Full refund up to 45 days per period of cover ▶ b) 不予承保 Not covered	▶ a) 全额赔偿最高达60日 Full refund up to 60 days per period of cover ▶ b) 不予承保 Not covered	▶ a) 全额赔偿最高达120日 Full refund up to 120 days per period of cover ▶ b) 每个保险期内最多高达5次 Up to five visits per period of cover
<b>26. 康复治疗 Rehabilitation</b>	▶ 每个医疗状况的符合条件住院治疗全额赔偿最高达30日 Full refund for eligible in-patient treatment only up to 30 days per medical condition	▶ 每个医疗状况全额赔偿最高达180日 Full refund for up to 180 days per medical condition	▶ 全额赔偿 Full refund	▶ 全额赔偿 Full refund

▶ 全额赔偿 Full refund    
 ▶ 不予承保 Not covered    
 ▶ 有限承保 Subject to limits    
 ▶ 可供选项 Optional

保障 Benefit	尊安 Essential	尊乐 Advance	尊爱 Excel	尊享 Apex
27. 先天性疾病 Congenital Disorders	▶ 每个保险期内最高限额 630,000人民币 Up to RMB 630,000 per period of cover	▶ 每个保险期内最高限额 630,000人民币 Up to RMB 630,000 per period of cover	▶ 每个保险期内最高限额 787,000人民币 Up to RMB 787,000 per period of cover	▶ 每个保险期内最高限额 945,000人民币 Up to RMB 945,000 per period of cover
28. 慢性疾病 Maintenance of Chronic Medical Conditions	▶ 不予承保 Not covered	▶ 全额赔偿 Full refund	▶ 全额赔偿 Full refund	▶ 全额赔偿 Full refund
29. 肾衰竭和肾透析 Renal Failure and Renal Dialysis	▶ a) 住院期间手术前后护理 全额赔偿 Full refund for in-patient pre and post-operative care ▶ b) 日间留院或门诊治疗每个保险期内最高限额 310,000人民币 Up to RMB 310,000 per period of cover for day-patient or out-patient care	▶ a) 住院期间全额赔偿 Full refund ▶ b) 日间留院或门诊治疗 每个保险期内最高限额 630,000人民币 Up to RMB 630,000 per period of cover	▶ a) 住院期间全额赔偿 Full refund ▶ b) 日间留院或门诊治疗 每个保险期内最高限额 630,000人民币 Up to RMB 630,000 per period of cover	▶ a) 住院期间全额赔偿 Full refund ▶ b) 日间留院或门诊治疗 每个保险期内最高限额 630,000人民币 Up to RMB 630,000 per period of cover
30. 牙科 Dental Care a) 例行牙科治疗 Routine dental treatment b) 复杂的牙科治疗 Complex dental treatment 等待期：被保险人保单生效日后的180日内产生的任何费用不予赔付。不管投保人续保与否，被保险人必须完成180日等待期才可赔付此保障。 Waiting Period: Any expenses incurred within 180 days after the start date of the insured person's policy are not payable. The insured person must have completed the waiting period of 180 days before the benefit is payable irrespective of whether the policyholder renews the insurance or not. 此保障有20%的自付比例 A co-insurance of 20% applies 所有正畸治疗有50%的自付比例 A 50% Co-insurance applies in respect of all orthodontic treatment	▶ a) 不予承保 Not covered ▶ b) 不予承保 Not covered	▶ a) 不予承保 Not covered ▶ b) 不予承保 Not covered	▶ a) 每个保险期内最高限额6,300人民币 Up to RMB 6,300 per period of cover ▶ b) 每个保险期内最高限额12,600人民币 Up to RMB 12,600 per period of cover	▶ a) 每个保险期内最高限额9,400人民币 Up to RMB 9,400 per period of cover ▶ b) 每个保险期内最高限额18,900人民币 Up to RMB 18,900 per period of cover
31. 生育保障 Maternity 等待期：被保险人保单生效日后的180日内产生的任何费用不予赔付。在第180日后至保单生效一年期间产生的费用，此保障有95%的自付比例。不管投保人续保与否，被保险人必须完成180日等待期才可赔付此保障。 生育次年有20%的自付比例 Waiting Period: Any expenses incurred within 180 days after the start date of the insured person's policy are not payable. For the expenses incurred after the 180th day to one year after the policy takes effect, this benefit has a 95% co-insurance. The insured person must have completed the waiting period of 180 days before the benefit is payable irrespective of whether the policyholder renews the insurance or not. 20% Co-Insurance will be applied for subsequent policy renewal.	▶ 不予承保 Not covered	▶ 不予承保 Not covered	▶ 不予承保 Not covered	▶ a) 自然分娩或自愿剖腹产 每个保险期内最高限额 110,250人民币 Medically necessary costs incurred during normal pregnancy and childbirth up to RMB 110,250 per period of cover ▶ b) 医疗上必需的或或紧急剖腹产每个保险期内最高限额220,500人民币 Cost associated with medically necessary and/or emergency caesarean section up to RMB 220,500 per period of cover

保障 Benefit	尊安 Essential	尊乐 Advance	尊爱 Excel	尊享 Apex
附加选项 Additional Options				
32. 美国境内的选择性治疗 USA Elective Treatment	可供选项 Optional 每个保险期内的最高限额 9,450,000人民币 Up to RMB 9,450,000 per period of cover	可供选项 Optional 每个保险期内的最高限额 9,450,000人民币 Up to RMB 9,450,000 per period of cover	可供选项 Optional 每个保险期内的最高限额 9,450,000人民币 Up to RMB 9,450,000 per period of cover	可供选项 Optional 每个保险期内的最高限额 9,450,000人民币 Up to RMB 9,450,000 per period of cover
33. 10% 门诊费用的自付比例 — 选项1* 10% Co-Insurance Out-Patient Treatment – Option 1*	不予承保 Not covered (若投保人选择了尊安计划下的 门诊医生费用保障选项1/2，则 可选此项。) (If the policyholder chooses Optional Out-Patient Charges – Option 1 or Option 2 under the Essential plan, the policyholder can select this option.)	可供选项 Optional	可供选项 Optional	可供选项 Optional
34. 20% 门诊费用的自付比例 — 选项2* 20% Co-Insurance Out-Patient Treatment – Option 2*	不予承保 Not covered (若投保人选择了尊安计划下的 门诊医生费用保障选项1/2，则 可选此项。) (If the policyholder chooses Optional Out-Patient Charges – Option 1 or Option 2 under the Essential plan, the policyholder can select this option.)	可供选项 Optional	可供选项 Optional	可供选项 Optional
35. 大中华区选择 Greater China option	可供选项 Optional 大中华区以外的紧急非选择性 治疗，因疾病治疗的 最高限额150,000人民币 Emergency non-elective illness limit up to RMB 150,000 per period of cover	可供选项 Optional 大中华区以外的紧急非选择性 治疗，因疾病治疗的 最高限额150,000人民币 Emergency non-elective illness limit up to RMB 150,000 per period of cover	可供选项 Optional 大中华区以外的紧急非选择性 治疗，因疾病治疗的 最高限额220,000人民币 Emergency non-elective illness limit up to RMB 220,000 per period of cover	可供选项 Optional 大中华区以外的紧急非选择性 治疗，因疾病治疗的 最高限额310,000人民币 Emergency non-elective illness limit up to RMB 310,000 per period of cover
36. 病房限制 — 仅适用于中国大陆居民 Hospital Room Restriction – PRC Residents only 中国大陆于昂贵医院接受住院或日间留院治疗有15%自付比例， 每个医疗状况最高自付额为47,000人民币。 于香港住院时，限于一般或双人病房 In/day-patient treatment received in any high cost in/day-patient facility in Mainland China will be subject to 15% co-insurance up to an out of pocket limit of RMB 47,000 per medical condition. Hospital admission in Hong Kong is limited to a ward or semi-private room	可供选项 Optional	可供选项 Optional	可供选项 Optional	可供选项 Optional
37. 昂贵医院自付比例 High Cost Provider Co-Insurance	不予承保 Not covered	可供选项 Optional 20% 自付比例，每个医疗 状况最高自付额为63,000人民币 20% co-insurance and up to an out of pocket limit of RMB 63,000 per medical condition	可供选项 Optional 20% 自付比例，每个医疗 状况最高自付额为63,000人民币 20% co-insurance and up to an out of pocket limit of RMB 63,000 per medical condition	可供选项 Optional 20% 自付比例，每个医疗 状况最高自付额为63,000人民币 20% co-insurance and up to an out of pocket limit of RMB 63,000 per medical condition
38. 昂贵医院限制 High Cost Provider Restriction	可供选项 Optional	可供选项 Optional	可供选项 Optional	可供选项 Optional
39. 尊安计划下的门诊医生费用保障 — 选项1 Optional Out-Patient Charges Option 1 under the Essential Plan a) 含咨询费在内的医生收费；专科医生费用；诊断检查费用；处方药和敷料 的费用。 Medical practitioner fees including consultations; specialist fees; diagnostic tests; prescribed drugs and dressings. b) 远程医疗咨询（医生以电子方式进行远程医疗咨询）。 Teleconsultation (Virtual Doctor appointments via electronic means). c) 维生素和矿物质 Vitamins and Minerals 此保障a, b, c应替代本保险合同第五条第20款(门诊医生费用)。 This benefit a, b and c replace Article 5, Benefit 20 – Out-Patient Charges. d) i. 由获得执业许可的物理治疗师提供的物理治疗费用。 Physiotherapy by a Registered Physiotherapist. ii. 被保险人接受治疗师的辅助药物和治疗，保险人应赔付实际产生的 有关医疗费用。此类赔偿可包括整骨疗法、手足病治疗和足病治疗、 整脊疗法、顺势疗法、饮食疗法和针灸疗法。 Complementary medicine and treatment by a therapist. This benefit extends to chiropractors, chiropodists and podiatrists, osteopaths, homeopaths, dietician and acupuncture treatment. iii. 保险人应赔付中医执业医师或阿育吠陀医学执业医师对被保险人进行 门诊治疗时实际产生的医疗费用。 Out-patient treatment for therapies administered by a recognised traditional Chinese Medical Practitioner or an Ayurvedic Medical Practitioner. 保险期内您可选择此保障d)或dii)，合共首5次治疗不需转介(饮食疗法除外)， 其他后续治疗需医生或专科医生转介。 You may choose 5 sessions for any combination of benefits in aggregate in a given period of cover for benefits d)ii) and d)iii) excluding dietician without the need of referral; any subsequent sessions need to be referred by a Medical Practitioner or Specialist. 此保障应替代本保险合同第五条第23款（门诊物理治疗和替代疗法）。 This benefit replaces Article 5, Benefit 23 – Out-Patient Physiotherapy and Alternative Therapies. e) 门诊精神疾病治疗 Out Patient Psychiatric Illness 此保障应替代本保险合同第五条第22款（门诊精神疾病治疗）。 This benefit replaces Article 5, Benefit 22 – Out-Patient psychiatric illness. f) 更年期激素替代治疗 Menopause Hormone Replacement Therapy 此保障应替代本保险合同第五条第21款（更年期激素替代治疗）。 This benefit replaces Article 5, Benefit 21 – Menopause Hormone Replacement Therapy.	可供选项 Optional a)和b) 每个保险期内的综合 最高限额31,500人民币 a) and b) Up to RMB 31,500 per period of cover c) 每个保险期内的 最高限额940人民币 Up to RMB 940 per period of cover d) 每个保险期内的综合最高限额 10次就诊全额赔偿。此物理 治疗治疗最高限额10次。 此保障将包含于第五条 第23款（门诊物理治疗和替 代疗法） Full Refund up to a maximum 10 sessions per period of cover in aggregate. Physiotherapy is limited to 10 sessions and not in addition to Article 5, Benefit 23. e) 每个保险期内的最高限额 10次治疗，综合最高限额 3,150人民币 Up to RMB 3,150 and up to 10 sessions per period of cover f) 每个保险期内的最高限额 2,500人民币 Up to RMB 2,500 per period of cover	不予承保 Not covered	不予承保 Not covered	不予承保 Not covered

\* 门诊费用的自付比例并不适用于保险人公布的国际医疗网络内中国大陆任何一家公立医院接受门诊治疗。  
\* Co-insurance does not apply to any out-patient treatment received in public hospitals in Mainland China that are within the Now Health International Provider Network

▶ 全额赔偿 Full refund  
▶ 不予承保 Not covered  
▶ 有限承保 Subject to limits  
▶ 可供选项 Optional

保障 Benefit	尊安 Essential	尊乐 Advance	尊爱 Excel	尊享 Apex
<p><b>40. 尊安计划下的门诊医生费用保障 – 选项2</b>  <b>Optional Out-Patient Charges Option 2 under the Essential Plan</b></p> <p>a) 含括咨询费在内的医生收费; 专科医生费用; 诊断检查费用; 慢性疾病进行治疗所实际产生的医疗费用; 处方药和敷料的费用。  <i>Medical practitioner fees including consultations; specialist fees; diagnostic tests and costs associated with maintenance of chronic medical conditions; prescribed drugs and dressings.</i></p> <p>b) 远程医疗咨询 (医生以电子方式进行远程医疗咨询)。  <i>Teleconsultation (Virtual Doctor appointments via electronic means).</i></p> <p>c) 维生素和矿物质  <i>Vitamins and Minerals</i></p> <p>此保障a, b, c应替代本保险合同第五条第20款(门诊医生费用)。  <i>This benefit a, b and c replace Article 5, Benefit 20 –Out-Patient Charges.</i></p> <p>d) i. 由获得执业许可的物理治疗师提供的物理治疗费用。  <i>Physiotherapy by a Registered Physiotherapist.</i>                      ii. 被保险人接受理疗师的辅助药物和治疗, 保险人应赔付实际产生的有关医疗费用。此类赔偿可包括整脊疗法、手足病治疗和足病治疗、整脊疗法、顺势疗法、饮食疗法和针灸疗法。  <i>Complementary medicine and treatment by a therapist. This benefit extends to chiropractors, chiropodists and podiatrists, osteopaths, homeopaths, dietician and acupuncture treatment.</i>                      iii. 保险人应赔付中医执业医师或阿育吠陀医学执业医师对被保险人进行门诊治疗时实际产生的医疗费用。  <i>Out-patient treatment for therapies administered by a recognised traditional Chinese Medical Practitioner or an Ayurvedic Medical Practitioner.</i></p> <p>保险期内您可选择此保障d(i)或d(ii), 合计首5次治疗不需转介(饮食疗法除外), 其他后续治疗需医生或专科医生转介。  <i>You may choose 5 sessions for any combination of benefits in aggregate in a given period of cover for benefits d(i) and d(ii) excluding dietician without the need of referral; any subsequent sessions need to be referred by a Medical Practitioner or Specialist.</i></p> <p>此保障应替代本保险合同第五条第23款 (门诊物理治疗和替代疗法)。  <i>This benefit replaces Article 5, Benefit 23 – Out-Patient Physiotherapy and Alternative Therapies.</i></p> <p>e) 门诊精神疾病治疗  <i>Out Patient Psychiatric Illness</i></p> <p>此保障应替代本保险合同第五条第22款 (门诊精神疾病治疗)。  <i>This benefit replaces Article 5, Benefit 22 – Out-Patient psychiatric illness.</i></p> <p>f) 更年期激素替代治疗  <i>Menopause Hormone Replacement Therapy</i></p> <p>此保障应替代本保险合同第五条第21款 (更年期激素替代治疗)。  <i>This benefit replaces Article 5, Benefit 21 – Menopause Hormone Replacement Therapy.</i></p>	<p>可供选项 <i>Optional</i></p> <p>a)和 b) 每个保险期内的综合最高限额31,500人民币  <i>Up to RMB 31,500 per period of cover</i></p> <p>c) 每个保险期内的最高限额940人民币  <i>Up to RMB 940 per period of cover</i></p> <p>d) 每个保险期内的综合最高限额10次就诊全额赔偿。此物理治疗就诊最高限额10次, 此保障将包含于第五条第23款 (门诊物理治疗和替代疗法)  <i>Full Refund up to a maximum 10 sessions per period of cover in aggregate. Physiotherapy is limited to 10 sessions and not in addition to Article 5, Benefit 23.</i></p> <p>e) 每个保险期内的最高限额10次治疗, 综合最高限额3,150人民币  <i>Up to RMB 3,150 and up to 10 sessions per period of cover</i></p> <p>f) 每个保险期内的最高限额2,500人民币  <i>Up to RMB 2,500 per period of cover</i></p>	<p>不予承保 <i>Not covered</i></p>	<p>不予承保 <i>Not covered</i></p>	<p>不予承保 <i>Not covered</i></p>
<p><b>41. 尊安计划下的门诊医生费用保障 – 选项3</b>  <b>Optional Out-Patient Charges Option 3 under the Essential Plan</b></p> <p>a) 紧急门诊保障  <i>Emergency out-patient benefit</i>                      在医院急诊部之紧急门诊治疗包括: 含括咨询费在内的医生收费; 专科医生费用; 诊断检查费用; 处方药和敷料的费用。  <i>Charges for emergency treatment received as an out-patient in the Accident and Emergency department of a medical provider including: Medical practitioner fees including consultation; specialist fees; diagnostic tests, prescribed drugs and dressings.</i></p> <p>b) 手术前后的门诊费用  <i>Pre and post-operative out-patient charges</i></p> <p>i. 含括咨询费在内的医生收费; 专科医生费用; 诊断检查费用; 处方药和敷料的费用  <i>Medical practitioner fees including consultations; specialist fees; diagnostic tests; prescribed drugs and dressings.</i></p> <p>ii. 远程医疗咨询 (医生以电子方式进行远程医疗咨询)  <i>Teleconsultation (Virtual Doctor appointments via electronic means)</i></p> <p>iii. 由获得执业许可的物理治疗师提供的物理治疗费用  <i>Physiotherapy by a Registered Physiotherapist</i></p> <p>此可供选项的保障应替代本保险合同第五条第20款(门诊医生费用)和第五条第23款(门诊物理治疗和替代疗法)。  <i>This benefit replaces Article 5 Benefit 20 – Out-Patient Charges and Article 5 Benefit 23 – Out-Patient Physiotherapy and Alternative Therapies.</i></p>	<p>可供选项 <i>Optional</i></p> <p>a) 每个保险期内综合最高限额1,850人民币, 并需扣除门诊每次就诊免赔额150人民币  <i>Up to RMB 1,850 per period of cover. For this benefit a RMB 150 out-patient per visit excess will be applicable</i></p> <p>d) 每个保险期内每个医疗状况综合最高限额为22,000人民币。物理治疗仅限5次  <i>Up to RMB 22,000 per medical condition per period of cover in aggregate. Physiotherapy is limited to 5 sessions</i></p>	<p>不予承保 <i>Not covered</i></p>	<p>不予承保 <i>Not covered</i></p>	<p>不予承保 <i>Not covered</i></p>
<p><b>42. 尊安计划下的门诊医生费用保障 – 选项2之直付网络</b>  <b>Direct Billing Network for Optional Out-Patient Charges Option 2 under the Essential Plan</b></p> <p>保险人为尊安计划下的门诊医生费用保障 – 选项2之被保险人在保险人公布的国际医疗网络内提供符合保障范围的门诊治疗之门诊直付服务。  <i>The insurer will provide out-patient direct billing service for eligible out-patient treatment in Now Health International Provider Network for insured person with out-patient charges option 2 benefit under the Essential Plan.</i></p>	<p>可供选项(此保障仅限于尊安计划下的门诊医生费用保障 – 选项2之被保险人)  <i>Optional for out-patient charges option 2 benefit under the Essential Plan</i></p>	<p>不予承保 <i>Not covered</i></p>	<p>不予承保 <i>Not covered</i></p>	<p>不予承保 <i>Not covered</i></p>
<p><b>43. 门诊限制 Out-Patient Restriction</b></p>	<p>不予承保 <i>Not covered</i></p>	<p>可供选项 <i>Optional</i>                      每个保险期内的最高限额31,000人民币  <i>Up to RMB 31,000 per period of cover</i></p>	<p>不予承保 <i>Not covered</i></p>	<p>不予承保 <i>Not covered</i></p>
<p><b>44. 住院及门诊自付比例</b>  <b>In-Patient and Out-Patient Co-Insurance</b></p>	<p>不予承保 <i>Not covered</i></p>	<p>可供选项 <i>Optional</i>                      20% 自付比例, 每个医疗状况最高自付额为63,000人民币                      20% co-insurance and up to an out of pocket limit of RMB 63,000 per medical condition</p>	<p>可供选项 <i>Optional</i>                      20% 自付比例, 每个医疗状况最高自付额为63,000人民币                      20% co-insurance and up to an out of pocket limit of RMB 63,000 per medical condition</p>	<p>可供选项 <i>Optional</i>                      20% 自付比例, 每个医疗状况最高自付额为63,000人民币                      20% co-insurance and up to an out of pocket limit of RMB 63,000 per medical condition</p>

保障 Benefit	尊安 Essential	尊乐 Advance	尊爱 Excel	尊享 Apex
<p>45. 体检、眼科、疫苗 – 选项1, 2 Wellness, Optical Benefits and Vaccinations (1, 2)</p> <p>等待期: 被保险人保单生效日后的180日内产生的任何费用不予赔付。不管投保人续保与否, 被保险人必须完成180日等待期才可赔付此保障。</p> <p>Waiting Period: Any expenses incurred within 180 days after the start date of the insured person's policy are not payable. The insured person must have completed the waiting period of 180 days before the benefit is payable irrespective of whether the policyholder renews the insurance or not.</p>	<p>选项1</p> <p>▶ 每个保险期内的综合最高限额3,150人民币(眼科保障最高限额1,890人民币)</p> <p>(若投保人选择了尊安计划下的门诊医生费用保障选项1/2, 则可选此项。)</p> <p>Combined limit RMB 3,150 (Optical sub-limit RMB 1,890) per period of cover</p> <p>选项2</p> <p>▶ 每个保险期内的综合最高限额6,300人民币(眼科保障最高限额3,780人民币)</p> <p>Combined limit RMB 6,300 (Optical sub-limit RMB 3,780) per period of cover</p> <p>选项2</p> <p>▶ 不予承保 Not covered</p>	<p>选项1</p> <p>▶ 每个保险期内的综合最高限额3,150人民币(眼科保障最高限额1,890人民币)</p> <p>Combined limit RMB 3,150 (Optical sub-limit RMB 1,890) per period of cover</p> <p>选项2</p> <p>▶ 每个保险期内的综合最高限额6,300人民币(眼科保障最高限额3,780人民币)</p> <p>Combined limit RMB 6,300 (Optical sub-limit RMB 3,780) per period of cover</p>	<p>选项1</p> <p>▶ 每个保险期内的综合最高限额3,150人民币(眼科保障最高限额1,890人民币)</p> <p>Combined limit RMB 3,150 (Optical sub-limit RMB 1,890) per period of cover</p> <p>选项2</p> <p>▶ 每个保险期内的综合最高限额6,300人民币(眼科保障最高限额3,780人民币)</p> <p>Combined limit RMB 6,300 (Optical sub-limit RMB 3,780) per period of cover</p>	<p>选项1</p> <p>▶ 每个保险期内的综合最高限额3,150人民币(眼科保障最高限额1,890人民币)</p> <p>Combined limit RMB 3,150 (Optical sub-limit RMB 1,890) per period of cover</p> <p>选项2</p> <p>▶ 每个保险期内的综合最高限额6,300人民币(眼科保障最高限额3,780人民币)</p> <p>Combined limit RMB 6,300 (Optical sub-limit RMB 3,780) per period of cover</p>
<p>46. 体检、疫苗 – 选项3 Wellness and Vaccinations 3</p> <p>等待期: 被保险人保单生效日后的180日内产生的任何费用不予赔付。不管投保人续保与否, 被保险人必须完成180日等待期才可赔付此保障。</p> <p>Waiting Period: Any expenses incurred within 180 days after the start date of the insured person's policy are not payable. The insured person must have completed the waiting period of 180 days before the benefit is payable irrespective of whether the policyholder renews the insurance or not.</p>	<p>选项3</p> <p>▶ 每个保险期内的综合最高限额1,570人民币</p> <p>(若投保人选择了尊安计划下的门诊医生费用保障选项1/2, 则可选此项。)</p> <p>Combined limit RMB 1,570 per period of cover</p> <p>(If the policyholder chooses Optional Out-Patient Charges – Option 1 or Option 2 under the Essential plan, the policyholder can select this option.)</p>	<p>选项3</p> <p>▶ 每个保险期内的综合最高限额1,570人民币</p> <p>Combined limit RMB 1,570 per period of cover</p>	<p>选项3</p> <p>▶ 每个保险期内的综合最高限额1,570人民币</p> <p>Combined limit RMB 1,570 per period of cover</p>	<p>选项3</p> <p>▶ 每个保险期内的综合最高限额1,570人民币</p> <p>Combined limit RMB 1,570 per period of cover</p>
<p>47. 转运和送返的增强保障 Extended evacuation and repatriation</p>	▶ 可供选项 Optional	▶ 可供选项 Optional	▶ 可供选项 Optional	▶ 可供选项 Optional
<p>48. 门诊每次就诊免赔额 – 选项1 Out-Patient per visit excess – option 1</p>	▶ 不予承保 Not covered	▶ 可供选项 Optional 150人民币 RMB 150	▶ 可供选项 Optional 150人民币 RMB 150	▶ 可供选项 Optional 150人民币 RMB 150
<p>49. 门诊每次就诊免赔额 – 选项2 Out-Patient per visit excess – option 2</p>	▶ 不予承保 Not covered	▶ 可供选项 Optional 90人民币 RMB 90	▶ 可供选项 Optional 90人民币 RMB 90	▶ 可供选项 Optional 90人民币 RMB 90
<p>50. 尊安和尊乐计划下的牙科保障选项 Optional Dental Care under the Essential and Advance Plan</p> <p>a) 例行牙科治疗 Routine dental treatment b) 复杂的牙科治疗 Complex dental treatment</p> <p>等待期: 被保险人保单生效日后的180日内产生的任何费用不予赔付。不管投保人续保与否, 被保险人必须完成180日等待期才可赔付此保障。</p> <p>Waiting Period: Any expenses incurred within 180 days after the start date of the insured person's policy are not payable. The insured person must have completed the waiting period of 180 days before the benefit is payable irrespective of whether the policyholder renews the insurance or not.</p> <p>此保障有20%的自付比例 A co-insurance of 20% applies</p>	<p>▶ 可供选项 Optional</p> <p>a) 每个保险期内最高限额1,575人民币 Up to RMB 1,575 per period of cover</p> <p>d) 每个保险期内最高限额6,300人民币 Up to RMB 6,300 per period of cover</p>	<p>▶ 可供选项 Optional</p> <p>a) 每个保险期内最高限额1,575人民币 Up to RMB 1,575 per period of cover</p> <p>d) 每个保险期内最高限额6,300人民币 Up to RMB 6,300 per period of cover</p>	▶ 不予承保 Not covered	▶ 不予承保 Not covered
<p>51. 移除生育保障 Removal of Maternity</p>	▶ 不予承保 Not covered	▶ 不予承保 Not covered	▶ 不予承保 Not covered	▶ 可供选项 Optional
<p>56. 医院病房住宿费限制选项 Hospital Room Rate Restriction Option</p>	▶ 可供选项 Optional 住院或日间留院治疗每日最高限额2,000人民币 Up to RMB 2,000 per day for any In-Patient or Day-Patient treatment.	▶ 可供选项 Optional 住院或日间留院治疗每日最高限额2,000人民币 Up to RMB 2,000 per day for any In-Patient or Day-Patient treatment.	▶ 可供选项 Optional 住院或日间留院治疗每日最高限额2,000人民币 Up to RMB 2,000 per day for any In-Patient or Day-Patient treatment.	▶ 可供选项 Optional 住院或日间留院治疗每日最高限额2,000人民币 Up to RMB 2,000 per day for any In-Patient or Day-Patient treatment.
<p>57. 大中华区公立医院选项 (除尊享计划外的所有计划) Greater China Public Hospital Option (All Plans except Apex)</p> <p>您选择此福利选项时, 住院现金津贴保障将不予赔付。如您选择此选项, 「病房限制」和「医院病房住宿费限制」选项将不适用。</p> <p>怀孕和分娩期间出现的医疗状况不属于/不视为任何紧急非选择性治疗。</p> <p>如果您选择了此选项, 则美国境内的选择性治疗选项不适用。</p> <p>Hospital Cash Benefit is not payable when you select this benefit option. Hospital Room Restriction and Hospital Room Rate Restriction options are not available if you select this option. Pregnancy and Childbirth conditions are excluded from any Emergency non elective treatment. USA Elective Treatment option is not available if you have selected this option.</p>	▶ 可供选项 Optional 大中华区以外的紧急非选择性治疗最高限额150,000人民币 Up to RMB 150,000 for Emergency non elective treatment for illness outside of Greater China	▶ 可供选项 Optional 大中华区以外的紧急非选择性治疗最高限额150,000人民币 Up to RMB 150,000 for Emergency non elective treatment for illness outside of Greater China	▶ 可供选项 Optional 大中华区以外的紧急非选择性治疗最高限额220,000人民币 Up to RMB 220,000 for Emergency non elective treatment for illness outside of Greater China	▶ 不予承保 Not covered

保障 Benefit	尊安 Essential	尊乐 Advance	尊爱 Excel	尊享 Apex
免赔额选项 Deductible Options				
52. 标准免赔额 Standard Deductible	零 Nil	零 Nil	零 Nil	零 Nil
自选免赔额 Optional Deductible	RMB 950	RMB 950	RMB 950	RMB 950
a) 如果投保人选择了尊乐、尊爱或尊享计划，并选择了一项的免赔额选项，投保人需要就门诊费用的自付比例或门诊每次就诊免赔额的其中一项作出相关选择。 If the policyholder has chosen Advance, Excel or Apex plan, and has selected a deductible option, the policyholder is required to select either a co-insurance out-patient treatment option or an out-patient per visit excess option.	RMB 1,570	RMB 1,570	RMB 1,570	RMB 1,570
	RMB 3,150	RMB 3,150	RMB 3,150	RMB 3,150
b) 如果投保人选择了尊安计划下的门诊费用保障： i) 投保人如果选择了自选免赔额，投保人需要就门诊费用的自付比例的其中一项作出相关选择。 ii) 投保人可选择最高免赔额为31,500人民币。 If the applicant chooses Optional Out-Patient Charges under Essential: i) If the applicant chooses an optional deductible and an out-patient charges option, the applicant must also select an out-patient co-insurance option. ii) Please note that if a deductible option is chosen, the maximum deductible option can be chosen is up to RMB 31,500.	RMB 6,300	RMB 6,300	RMB 6,300	RMB 6,300
	RMB 15,700	RMB 15,700	RMB 15,700	RMB 15,700
	RMB 31,500	RMB 31,500	RMB 31,500	RMB 31,500
	RMB 63,000	RMB 63,000	RMB 63,000	RMB 63,000
	RMB 94,500	RMB 94,500	RMB 94,500	RMB 94,500

# 责任免除 | Exclusions

- ▶ 恐怖主义行为、战争与违法行为  
Act of terrorism, war and illegal acts
- ▶ 行政与运输费用  
Administrative and shipping fee
- ▶ 酗酒与药物滥用  
Alcohol and drug abuse
- ▶ 过敏测试  
Allergy Testing
- ▶ 化学品暴露  
Chemical exposure
- ▶ 整容/美容治疗  
Cosmetic treatment
- ▶ 污染  
Contamination
- ▶ 慢性病 — 尊享保单适用  
Chronic conditions – Essential plan only
- ▶ 昏迷或植物人状态  
Coma or Vegetative State
- ▶ 免赔额、门诊每次就诊免赔额或自付比例  
Deductible, out-patient per visit excess or co-insurance
- ▶ 牙科护理 — 除非此为计划保障或为附加选项包含在保险合同中  
Dental care – unless this additional option has been chosen or included within the core benefits of the plan
- ▶ 发育异常  
Developmental disorders
- ▶ 食物补充品和洗化产品  
Dietary supplements and cosmetic products
- ▶ 进食失调  
Eating disorders
- ▶ 实验性治疗和药物  
Experimental treatment and drugs
- ▶ 外部器械和/或假体  
External appliance and or prosthesis
- ▶ 视力检查或视力矫正、听力检查、听力或视觉辅助 — 除非此保障包含在保险合同中  
Eyesight tests or vision correction, hearing tests, hearing or visual aids – except as stated in the benefit schedule
- ▶ 不遵医嘱  
Failure to follow medical advice
- ▶ 胎儿手术  
Foetal surgery
- ▶ 基因检测  
Genetic testing
- ▶ 高风险运动及工作  
Hazardous sports and pursuits
- ▶ 人类免疫缺陷病毒、艾滋病或性传染疾病 — 除非保障包含在保障一览表  
HIV, AIDS or sexually transmitted disease – except as stated in the benefit schedule
- ▶ 激素替代治疗 — 除非该医疗状况是因医疗干预所致  
HRT unless caused due to medical intervention
- ▶ 肥胖和减肥  
Obesity and weight loss
- ▶ 在护理院、疗养院、康体水疗院、健康度假村、健康水疗中心和自然疗法门诊的治疗  
Nursing homes, convalescence homes health hydros, health resorts, health spas and nature clinics
- ▶ 投保前疾病 — 除非保障预先获得保险人授权  
Pre-existing Medical Conditions – unless agreed by us in writing
- ▶ 怀孕或分娩 — 因怀孕或分娩、医疗上必需的和/或紧急剖腹产或自愿剖腹产而产生的费用不在承保范围之列, 除非生育保障列在被保险人的保险合同中  
Pregnancy or maternity – costs relating to pregnancy or childbirth, medically necessary and/or emergency caesarean section, voluntary caesarean section, unless maternity benefits are shown on the certificate of insurance
- ▶ 职业体育运动  
Professional sports
- ▶ 不育症相关治疗  
Reproductive treatment and drugs
- ▶ 例行检验、健康检查 — 除非此保障已作为附加选项包含在保险合同中  
Routine examinations, health screening – unless this additional option has been chosen
- ▶ 第二诊疗意见 — 除非保障预先获得保险人授权  
Second opinions – unless agreed by us in writing
- ▶ 自残或试图自杀  
Self-inflicted injuries or attempted suicide
- ▶ 性问题和变性  
Sexual problems and gender reassignment
- ▶ 睡眠失调  
Sleep disorders
- ▶ 旅行/住宿费用 — 除非保障预先获得保险人授权  
Travel /accommodation costs – except those pre-authorized by the insurer
- ▶ 违反医生嘱咐的旅行费用  
Travelling against medical advice
- ▶ 来自家庭成员的治疗  
Treatment by a family member
- ▶ 超出合理及惯常收费范围的治疗费用  
Treatment charges outside of our reasonable and customary range
- ▶ 中医治疗  
Traditional Chinese Medicine

有关责任免除的完整内容, 请参阅保险合同条款。

For a full description of the exclusions, please refer to the policy wording.

# 立即投保

## Join WorldCare today

投保《全球保》快捷方便。  
如果您希望轻松方便地取得国际医疗  
保险服务, 请咨询您的保险中介以了  
解更多信息。

*It's quick and easy to join WorldCare.  
If you're looking for a simple  
approach to international health  
insurance, ask your intermediary for  
more information.*





## Now Health International

### 阿联酋 UAE

Arabia Insurance Company S.A.L.  
c/o Now Health International Gulf Third Party Administrators LLC,  
PO Box 334337, Dubai, United Arab Emirates  
T +971 (0) 4450 1410 | F +971 (0) 4450 1416  
MEAService@worldcare.ae

### 全球 Rest of the World

Now Health International Limited  
PO Box 482055, Dubai, UAE  
T +971 (0) 4450 1510 | F +971 (0) 4450 1530  
CustomerService@now-health.com

### 欧洲 (马耳他) Europe (Malta)

Now Health International Services (Europe) Limited  
Dragonara Business Centre 5th Floor,  
Dragonara Road, St Julian's, STJ 3141, Malta  
T +356 2260 5110  
CustomerService@now-health.com

### 欧洲 (西班牙) Europe (Spain)

Now Health International Services (Europe) Limited  
Edificio Orense 34 (Torre Norte – Planta 07),  
Calle Orense 34, CP 28020 - Madrid, Spain  
T +34 911 841 690  
CustomerService@now-health.com

### 英国 United Kingdom

Now Health International (UK) Limited  
Suite 2.3, Building Three, Watchmoor Park, Camberley,  
Surrey, GU15 3YL, United Kingdom  
T +44 (0) 1276 602110 | F +44 (0) 1276 602130  
CustomerService@now-health.com

### 亚太 Asia Pacific

Now Health International (Asia Pacific) Limited  
Units 1501-3, 15/F, AIA Tower, 183 Electric Road  
North Point, Hong Kong  
T +852 2279 7310 | F +852 2279 7330  
CustomerService@now-health.com

### 中国 China

Asia-Pacific Property & Casualty Insurance Co., Ltd.  
c/o Now Health International (Shanghai) Limited  
Room 1105, 11/F, BM Tower  
No. 218 Wusong Road  
Hongkou District, Shanghai 200080, China  
T +(86) 400 077 7500 / +86 21 6156 0910 | F +(86) 400 077 7900  
CustomerService@now-health.com

### 新加坡 Singapore

Now Health International (Singapore) Pte. Ltd.  
4 Robinson Road  
#07-01A/02 The House of Eden  
Singapore 048543  
T +65 6880 2300 | F +65 6220 6950  
CustomerService@now-health.com

### 印尼 Indonesia

PT Now Health International Indonesia  
17/F, Indonesia Stock Exchange, Tower II  
Jl. Jend. Sudirman Kav. 52 – 53  
Jakarta 12190, Indonesia  
Toll-free 0800 1 889900/ Toll +62 21 2783 6910 | F +62 21 515 7639  
CustomerService@now-health.com

保险合同由亚太财产保险有限公司签发，并委托时康管理顾问(上海)有限公司进行保单管理。亚太财产保险有限公司地址：中国深圳市福田区中心区福华一路免税商务大厦29-30楼，邮编：518048  
时康管理顾问(上海)有限公司地址：中国上海市虹口区吴淞路218号宝矿国际大厦11楼1105室，邮编：200080

Policies are issued by Asia-Pacific Property & Casualty Insurance Co., Ltd.  
Registered Office: 29-30F., Dutyfree Business Building, 1st Fuhua Road, Futian CBD, Shenzhen 518048, China.  
Policies are administered by Now Health International (Shanghai) Limited.  
Room 1105, 11/F, BM Tower, No. 218 Wusong Road, Hongkou District, Shanghai 200080, China.